

State of the Workforce

The Workforce Board of Northern Cook County



February 2010



Regional Industry Summary

Part of a workforce board's mission is to support the labor needs of vital regional industries. By using several different metrics for identifying such industries, this section of the report provides a map of the region's economy, thus helping workforce boards allocate workforce training resources. The listing of critical occupations within high-growth industries (right column) highlights high-growth occupations in these industries.

Industries with the Most Jobs

- Local government
- Full-service restaurants
- General medical and surgical hospitals
- Managing offices
- Temporary help services

High-Growth Industries

- Temporary help services
- Computer systems design services
- Janitorial services
- Home health care services
- Child day care services

Concentrated Industries

These industries have an above-average share of total regional employment (compared to the U.S.):

- Office machinery manufacturing
- Passenger car leasing
- Residential electric lighting fixture mfg
- Pump and pumping equipment mfg
- Household cooking appliance mfg

Competitive Industries

These industries are outperforming national trends:

- Temporary help services
- Computer systems design services
- Child day care services
- Custom computer programming services
- Offices of physicians, except mental health

Critical Occupations in High-Growth Industries

Temporary help services:

- Laborers and freight, stock, and material movers, hand
- Production workers, all other
- Team assemblers
- Packers and packagers, hand
- Helpers--Production workers

Computer systems design services

- Computer software engineers, applications
- Computer software engineers, systems software
- Computer programmers
- Computer systems analysts
- Computer support specialists

Janitorial services:

- Janitors and cleaners, except maids and housekeeping cleaners
- Building cleaning workers, all other
- First-line supervisors/managers of housekeeping and janitorial workers
- Maids and housekeeping cleaners
- Laundry and dry-cleaning workers

Home health care services:

- Personal and home care aides
- Home health aides
- Nursing aides, orderlies, and attendants
- Registered nurses
- Psychiatric aides

Critical Occupations in High-Growth Industries, cont'd.

Child day care services:

- Child care workers
- Preschool teachers, except special education
- Teacher assistants
- Education administrators, preschool and child care center/program
- Kindergarten teachers, except special education

Offices of physicians, except mental health:

- Physicians and surgeons
- Medical assistants
- Registered nurses
- Receptionists and information clerks
- Medical secretaries

Offices of real estate agents and brokers:

- Real estate sales agents
- Real estate brokers
- Property, real estate, and community association managers
- Appraisers and assessors of real estate
- Chief executives

Managing offices:

- Business operation specialists, all other
- Accountants and auditors
- Customer service representatives
- Managers, all other
- Executive secretaries and administrative assistants

Custom computer programming services:

- Computer software engineers, applications
- Computer software engineers, systems software
- Computer systems analysts
- Computer programmers
- Network and computer systems administrators

Local government:

- Elementary school teachers, except special education
- Police and sheriff's patrol officers
- Fire fighters
- Middle school teachers, except special and vocational education
- Postsecondary teachers

Regional Industries: Detailed Data

Industry Sectors, Region and State, 2010-2015

The following table summarizes the region's economy in comparison to the state's. Broad industry sectors are sorted by Industry Sector.

		REGION				STATE				
NAICS Code	Description	2010 Jobs	2015 Jobs	Change	% Change	Current EPW	State 2010	State 2015	State % Change	State EPW
11	Agriculture, forestry, fishing and hunting	399	354	(45)	(11%)	\$26,247	87,248	80,534	(8%)	\$29,594
21	Mining	353	481	128	36%	\$67,614	20,993	23,228	11%	\$54,986
22	Utilities	529	584	55	10%	\$122,450	23,819	23,428	(2%)	\$129,613
23	Construction	41,649	44,911	3,262	8%	\$63,041	361,131	384,438	6%	\$64,038
31-33	Manufacturing	50,548	46,030	(4,518)	(9%)	\$58,276	592,581	568,785	(4%)	\$70,662
42	Wholesale trade	39,085	39,069	(16)	0%	\$77,031	318,139	323,907	2%	\$78,180
44-45	Retail trade	74,713	76,789	2,076	3%	\$26,579	720,349	737,426	2%	\$29,235
48-49	Transportation and warehousing	31,090	33,299	2,209	7%	\$43,869	342,977	366,314	7%	\$56,444
51	Information	18,360	18,626	266	1%	\$73,242	127,524	130,711	2%	\$72,706
52	Finance and insurance	44,795	47,948	3,153	7%	\$83,366	463,764	512,103	10%	\$80,223
53	Real estate and rental and leasing	28,896	34,046	5,150	18%	\$34,163	310,675	365,998	18%	\$27,245
54	Professional and technical services	69,734	80,818	11,084	16%	\$83,738	545,177	611,023	12%	\$82,746
55	Management of companies and enterprises	17,754	19,071	1,317	7%	\$116,227	98,833	104,265	5%	\$124,425
56	Administrative and waste services	62,047	74,642	12,595	20%	\$31,477	467,533	546,019	17%	\$33,918
61	Educational services	16,839	19,467	2,628	16%	\$39,515	192,541	217,584	13%	\$40,451
62	Health care and social assistance	89,119	104,240	15,121	17%	\$40,906	837,315	954,709	14%	\$46,734
71	Arts, entertainment, and recreation	14,668	16,756	2,088	14%	\$21,388	149,812	170,376	14%	\$24,811
72	Accommodation and food services	50,652	54,712	4,060	8%	\$21,570	475,541	513,505	8%	\$20,114
81	Other services, except public administration	38,098	40,271	2,173	6%	\$32,890	387,245	407,942	5%	\$31,284
90	Government	51,588	53,188	1,600	3%	\$52,294	874,702	900,752	3%	\$61,640
Total		740,916	805,300	64,384	9%	\$50,929	7,397,900	7,943,047	7%	\$53,053

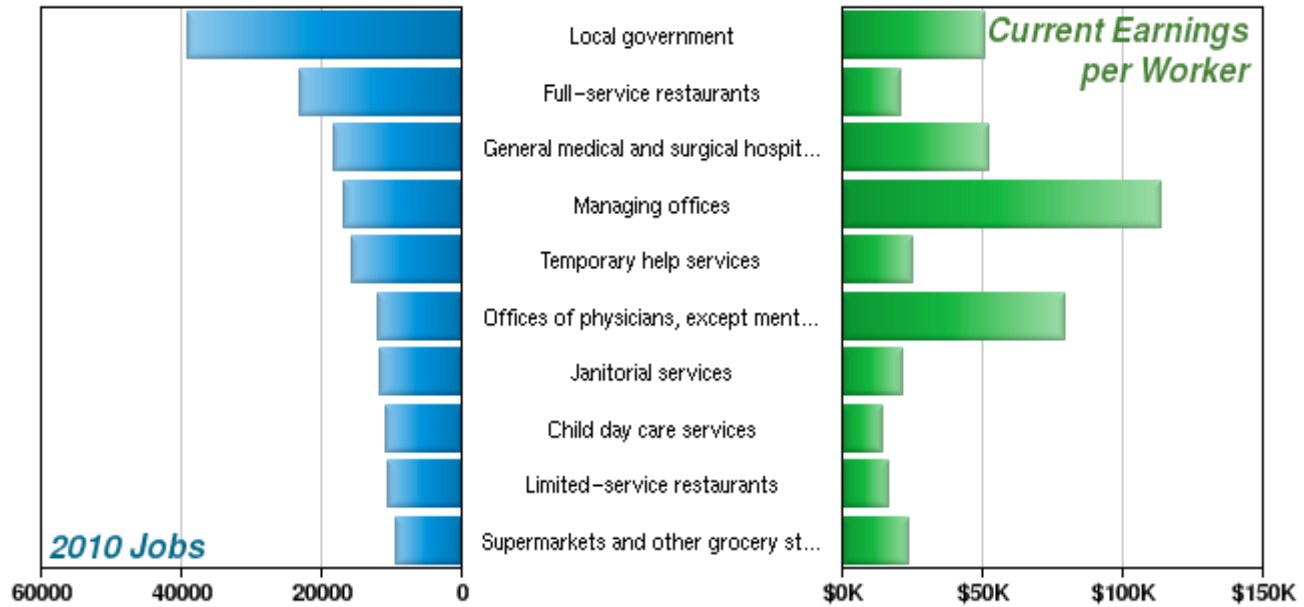
Source: EMSI Complete Employment - 4th Quarter 2009

EPW stands for "earnings per worker," which is the total wage, salary, bonuses, and other compensation paid in the industry divided by the number of workers. Note that for regions including multiple states, the "State" values are the sum or average of the values for all states involved.

Industry sectors and specific industries in the following sections are listed by NAICS code. For more information, see <http://www.bls.gov/bls/naics.htm>.

Regional Industries Providing the Most Jobs, 2010-2015

This section shows industries at a much greater level of detail than the sectors on the previous page.

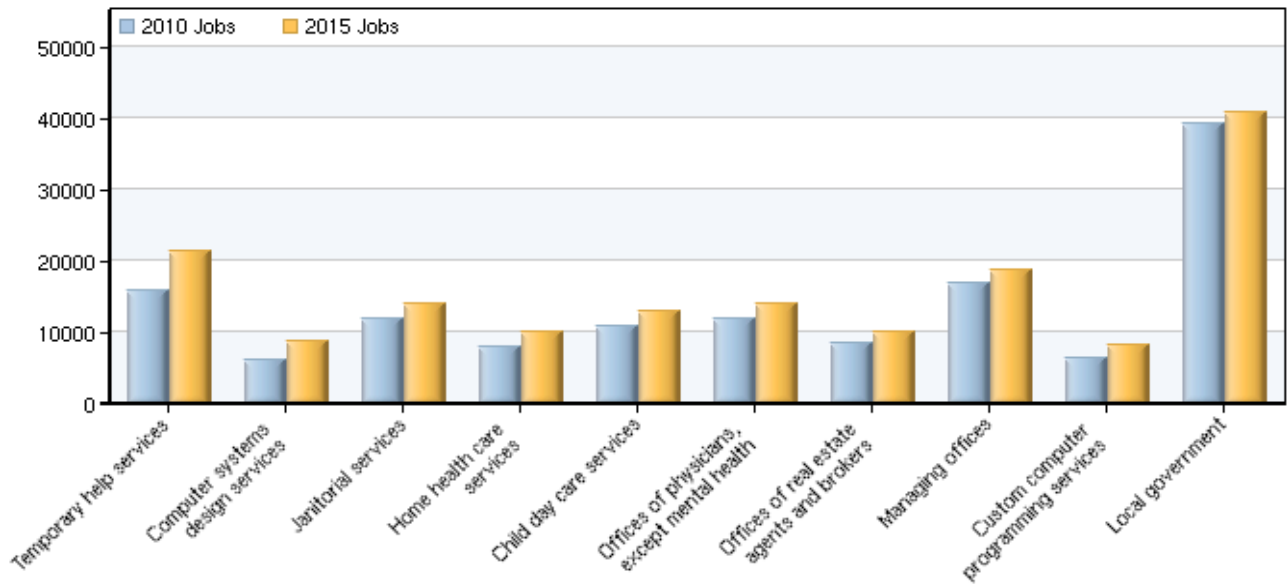


NAICS Code	Description	2010 Jobs	2015 Jobs	Change	% Change	Current EPW
930000	Local government	39,282	40,905	1,623	4%	\$50,873
722110	Full-service restaurants	23,096	24,434	1,338	6%	\$20,857
622110	General medical and surgical hospitals	18,173	19,704	1,531	8%	\$52,266
551114	Managing offices	16,898	18,557	1,659	10%	\$113,529
561320	Temporary help services	15,771	21,310	5,539	35%	\$25,344
621111	Offices of physicians, except mental health	11,858	13,858	2,000	17%	\$79,471
561720	Janitorial services	11,786	13,956	2,170	18%	\$21,231
624410	Child day care services	10,786	12,871	2,085	19%	\$14,560
722211	Limited-service restaurants	10,674	11,452	778	7%	\$16,290
445110	Supermarkets and other grocery stores	9,304	9,397	93	1%	\$23,832
524210	Insurance agencies and brokerages	8,755	9,626	871	10%	\$70,304
623110	Nursing care facilities	8,350	9,429	1,079	13%	\$28,766
531210	Offices of real estate agents and brokers	8,349	10,020	1,671	20%	\$19,573
621610	Home health care services	7,877	10,028	2,151	27%	\$23,358
425120	Wholesale trade agents and brokers	7,643	7,988	345	5%	\$92,421
920000	State government	6,935	7,153	218	3%	\$58,398
524126	Direct property and casualty insurers	6,891	7,422	531	8%	\$101,977
611310	Colleges, universities, and professional schools	6,835	7,878	1,043	15%	\$49,630
452112	Discount Department Stores	6,698	7,144	446	7%	\$17,919
721110	Hotels and motels, except casino hotels	6,696	7,187	491	7%	\$34,611

Source: EMSI Complete Employment - 4th Quarter 2009

Highest Growth Regional Industries, 2010–2015

These industries are projected to add the most total jobs.



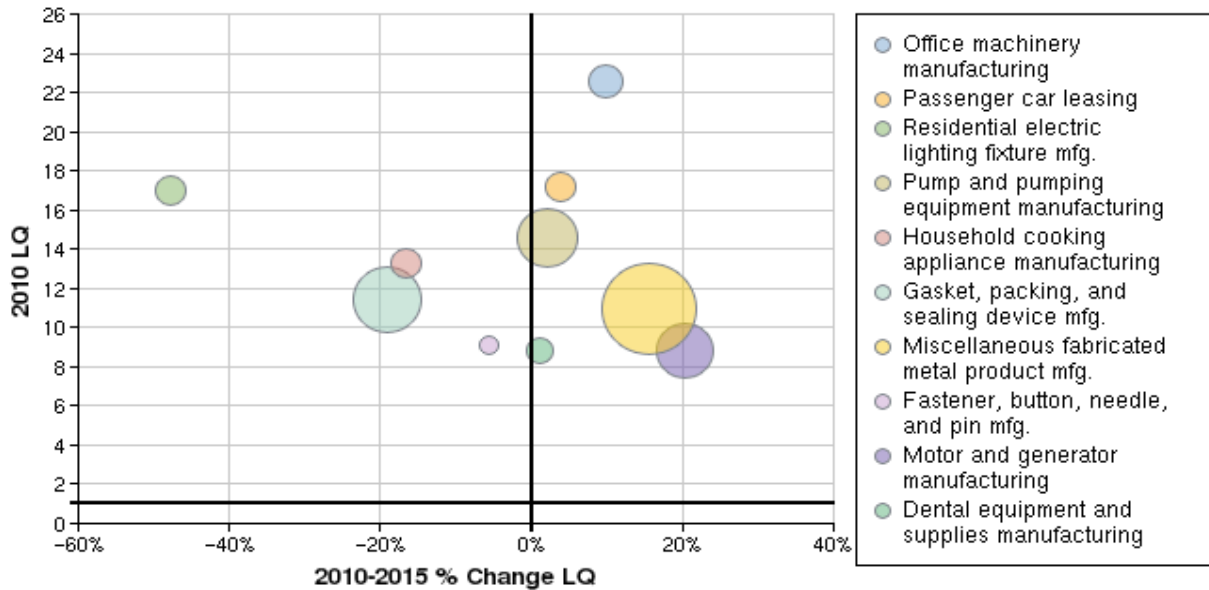
NAICS Code	Description	2010 Jobs	2015 Jobs	Change	% Change	2009 EPW
561320	Temporary help services	15,771	21,310	5,539	35%	\$25,344
541512	Computer systems design services	6,080	8,672	2,592	43%	\$92,121
561720	Janitorial services	11,786	13,956	2,170	18%	\$21,231
621610	Home health care services	7,877	10,028	2,151	27%	\$23,358
624410	Child day care services	10,786	12,871	2,085	19%	\$14,560
621111	Offices of physicians, except mental health	11,858	13,858	2,000	17%	\$79,471
531210	Offices of real estate agents and brokers	8,349	10,020	1,671	20%	\$19,573
551114	Managing offices	16,898	18,557	1,659	10%	\$113,529
541511	Custom computer programming services	6,380	8,035	1,655	26%	\$94,817
930000	Local government	39,282	40,905	1,623	4%	\$50,873
622110	General medical and surgical hospitals	18,173	19,704	1,531	8%	\$52,266
623311	Continuing care retirement communities	3,435	4,781	1,346	39%	\$26,107
722110	Full-service restaurants	23,096	24,434	1,338	6%	\$20,857
541611	Administrative management consulting services	5,225	6,446	1,221	23%	\$110,166
531390	Other activities related to real estate	4,297	5,448	1,151	27%	\$19,630
541613	Marketing consulting services	3,352	4,436	1,084	32%	\$86,871
623110	Nursing care facilities	8,350	9,429	1,079	13%	\$28,766
611310	Colleges, universities, and professional schools	6,835	7,878	1,043	15%	\$49,630
236118	Residential remodelers	4,665	5,706	1,041	22%	\$72,054
523930	Investment advice	3,264	4,286	1,022	31%	\$53,048

Source: EMSI Complete Employment - 4th Quarter 2009

Most Concentrated Regional Industries, 2010–2015

Location quotients (LQs) are a way of measuring an industry’s regional concentration. A region with an average presence (or concentration) of a certain industry, compared to the national economy, will have an LQ of 1.0 for that industry. High-LQ industries are generally ones that are important to the region’s economic base—that is, they bring money into the region rather than circulating what is already there. As such, they are important targets for retention, expansion, and workforce development efforts.

Note: circle size indicates number of jobs in the industry.



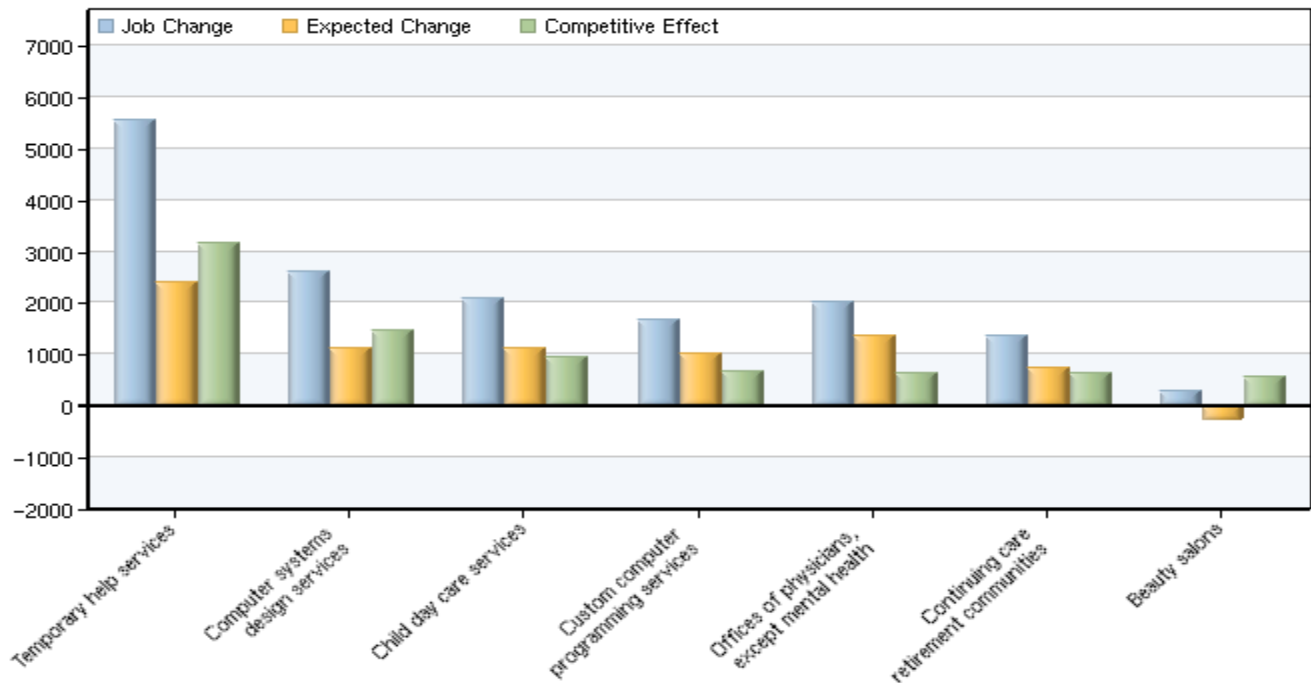
NAICS Code	Description	2010 Jobs	2015 Jobs	% Change	2010 LQ	2015 LQ	% Change LQ	Current EPW
333313	Office machinery manufacturing	744	725	-3%	22.53	24.74	10%	\$66,364
532112	Passenger car leasing	718	741	3%	17.16	17.83	4%	\$71,319
335121	Residential electric lighting fixture mfg.	655	203	-69%	17.03	8.91	-48%	\$41,679
333911	Pump and pumping equipment manufacturing	1,686	1,810	7%	14.61	14.92	2%	\$70,730
335221	Household cooking appliance manufacturing	676	575	-15%	13.32	11.10	-17%	\$41,697
339991	Gasket, packing, and sealing device mfg.	1,917	1,615	-16%	11.43	9.25	-19%	\$58,028
332999	Miscellaneous fabricated metal product mfg.	2,680	3,206	20%	10.99	12.69	15%	\$45,785
339993	Fastener, button, needle, and pin mfg.	277	229	-17%	9.09	8.58	-6%	\$46,794
335312	Motor and generator manufacturing	1,511	1,520	1%	8.86	10.66	20%	\$70,614
339114	Dental equipment and supplies manufacturing	597	650	9%	8.81	8.91	1%	\$57,820
611430	Management training	2,340	3,048	30%	8.37	9.42	13%	\$52,555
511140	Directory and mailing list publishers	1,545	1,425	-8%	7.82	7.11	-9%	\$73,588
524130	Reinsurance carriers	915	802	-12%	7.77	7.28	-6%	\$118,691
813920	Professional organizations	2,985	3,355	12%	7.50	7.57	1%	\$64,429
532411	Transportation equipment rental and leasing	322	322	0%	7.14	8.33	17%	\$185,503
325192	Cyclic crude and intermediate manufacturing	33	21	-36%	7.03	10.01	42%	\$92,141
333993	Packaging machinery manufacturing	460	557	21%	7.02	8.91	27%	\$93,958
561450	Credit bureaus	565	629	11%	6.42	7.45	16%	\$113,014
334517	Irradiation apparatus manufacturing	345	316	-8%	6.38	5.39	-16%	\$74,752
322226	Surface-coated paperboard manufacturing	47	14	-70%	6.21	1.88	-70%	\$61,231

Source: EMSI Complete Employment - 4th Quarter 2009

Most Competitive Regional Industries, 2010–2015

The regional competitiveness of an industry can be quantified using the standard “shift share” method. This method generates a “competitiveness effect” for the industry, which is basically regional job growth in the industry that exceeded national trends. These national trends include the percent growth of the U.S. economy and the percent growth of the given industry at the national level. The higher the competitiveness effect, the more the regional industry is outperforming national averages. Industries with a high competitiveness effect can give clues about the region’s comparative advantages, and are prime targets for regional workforce initiatives.

GRAPH/TABLE: INDUSTRIES WITH HIGHEST COMPETITIVE EFFECT



NAICS Code	Description	Job Change	Ind Mix Effect	National Growth Effect	Expected Change	Competitive Effect	Current EPW
561320	Temporary help services	5,539	1,173	1,212	2,385	3,153	\$25,344
541512	Computer systems design services	2,592	659	467	1,126	1,465	\$92,121
624410	Child day care services	2,085	301	829	1,130	956	\$14,560
541511	Custom computer programming services	1,655	515	490	1,005	649	\$94,817
621111	Offices of physicians, except mental health	2,000	455	911	1,366	634	\$79,471
623311	Continuing care retirement communities	1,346	467	264	731	615	\$26,107
812112	Beauty salons	294	-712	437	-275	569	\$23,372
623110	Nursing care facilities	1,079	-113	642	529	551	\$28,766
334511	Search, detection, and navigation instruments	599	-108	180	72	527	\$94,094
621340	Offices of specialty therapists	884	212	207	419	465	\$41,468
551114	Managing offices	1,659	-98	1,298	1,200	458	\$113,529
332999	Miscellaneous fabricated metal product mfg.	526	-136	206	70	455	\$45,785
561720	Janitorial services	2,170	819	906	1,725	445	\$21,231
621610	Home health care services	2,151	1,101	605	1,706	445	\$23,358
236118	Residential remodelers	1,041	253	358	611	429	\$72,054
713940	Fitness and recreational sports centers	765	146	219	365	401	\$16,153
611310	Colleges, universities, and professional schools	1,043	143	525	668	375	\$49,630

Industries with Highest Competitive Effect, cont.'d

611430	Management training	708	162	180	342	366	\$52,555
524126	Direct property and casualty insurers	531	-359	530	171	360	\$101,977
541618	Other management consulting services	371	-79	105	26	346	\$113,831

Source: EMSI Complete Employment - 4th Quarter 2009

NOTE ON SHIFT SHARE TERMINOLOGY

In shift share analysis, “expected” job growth is based on the total regional industry jobs at the beginning of the timeframe, the regional jobs that could be attributed to the growth rate of the national economy during the timeframe (“national growth effect”), and the regional jobs that could be attributed to the growth rate of the same industry at the national level during the timeframe (“industry mix effect”). The difference between this expected job change and actual job change is called the regional “competitiveness effect.”

Critical Occupations in High-Growth Industries

The following tables show the highest-growth occupations within each of the highest-growth regional industries from 2010 to 2015. They provide a business-oriented view of the most in-demand jobs over that time-frame. Many jobs found here, especially with an education level of “short-term or moderate-term on-the-job training” (ST OJT or MT OJT), are likely to be good candidates for industry-oriented continuing education programs.

Average Education is the most common education level held by workers in the occupation, based on national survey data published by the federal Bureau of Labor Statistics. Most occupations have a range of education and training levels.

Education level abbreviations:

ST OJT: Short-term on-the-job training
 MT OJT: Moderate-term on-the-job training
 LT OJT: Long-term on-the-job training
 Exp. in Field: Work experience in a related field
 PS Award: Postsecondary award
 Associate's: Associate's degree

Bachelor's: Bachelor's degree
 DG + Exp.: Degree plus work experience
 Master's: Master's degree
 Doctoral: Doctoral degree
 Prof. DG: First professional degree

Critical Occupations: Temporary Help Services

Occupation	Job Growth (In Industry)	Median Hourly Wage (All Industries)	Average Education
Laborers and freight, stock, and material movers, hand	712	\$10.81	ST OJT
Production workers, all other	352	\$13.08	MT OJT
Team assemblers	335	\$10.46	MT OJT
Packers and packagers, hand	250	\$9.18	ST OJT
Helpers--Production workers	202	\$9.20	ST OJT
Construction laborers	188	\$19.27	MT OJT
Office clerks, general	175	\$13.51	ST OJT
Registered nurses	169	\$31.87	Associate's
Customer service representatives	162	\$17.47	MT OJT
Employment, recruitment, and placement specialists	106	\$23.83	Bachelor's

Source: EMSI Complete Employment - 4th Quarter 2009

Critical Occupations: Computer Systems Design Services

Occupation	Job Growth (In Industry)	Median Hourly Wage (All Industries)	Average Education
Computer software engineers, applications	355	\$43.52	Bachelor's
Computer software engineers, systems software	283	\$46.00	Bachelor's
Computer programmers	216	\$34.95	Bachelor's
Computer systems analysts	179	\$37.57	Bachelor's
Computer support specialists	113	\$24.23	Associate's
Computer specialists, all other	112	\$36.09	Associate's
Network and computer systems administrators	107	\$36.33	Bachelor's
Network systems and data communication analysts	100	\$33.14	Bachelor's
Computer and information systems managers	85	\$56.73	DG. + Exp.
Business operation specialists, all other	66	\$26.92	Bachelor's

Source: EMSI Complete Employment - 4th Quarter 2009

Critical Occupations: Janitorial Services

Occupation	Job Growth (In Industry)	Median Hourly Wage (All Industries)	Average Education
Janitors and cleaners, except maids and housekeeping cleaners	1,021	\$11.81	ST OJT
Building cleaning workers, all other	382	\$8.29	ST OJT
First-line supervisors/managers of housekeeping and janitorial workers	249	\$12.75	Exp. in Field
Maids and housekeeping cleaners	234	\$9.30	ST OJT
Laundry and dry-cleaning workers	44	\$9.72	MT OJT
Pest control workers	33	\$12.25	MT OJT
Maintenance and repair workers, general	16	\$19.39	MT OJT
Sales representatives, services, all other	15	\$24.35	MT OJT
Chief executives	15	\$41.01	DG. + Exp.
Office clerks, general	13	\$13.51	ST OJT

Source: EMSI Complete Employment - 4th Quarter 2009

Critical Occupations: Home Health Care Services

Occupation	Job Growth (In Industry)	Median Hourly Wage (All Industries)	Average Education
Personal and home care aides	575	\$8.34	ST OJT
Home health aides	551	\$8.97	ST OJT
Nursing aides, orderlies, and attendants	205	\$11.45	PS Award
Registered nurses	188	\$31.78	Associate's
Psychiatric aides	152	\$8.54	ST OJT
Medical and health services managers	52	\$31.31	DG. + Exp.
Licensed practical and licensed vocational nurses	50	\$21.65	PS Award
Physical therapists	42	\$35.60	Master's
Medical and public health social workers	25	\$22.05	Bachelor's
Office clerks, general	21	\$13.51	ST OJT

Source: EMSI Complete Employment - 4th Quarter 2009

Critical Occupations: Child Day Care Services

Occupation	Job Growth (In Industry)	Median Hourly Wage (All Industries)	Average Education
Child care workers	1,449	\$8.31	ST OJT
Preschool teachers, except special education	260	\$10.86	PS Award
Teacher assistants	120	\$13.54	ST OJT
Education administrators, preschool and child care center/program	41	\$13.12	DG. + Exp.
Kindergarten teachers, except special education	36	\$19.45	PS Award
Education administrators, elementary and secondary school	12	\$11.21	DG. + Exp.
Education administrators, all other	13	\$12.29	DG. + Exp.
Education administrators, postsecondary	12	\$61.11	DG. + Exp.
Cooks, institution and cafeteria	12	\$16.81	MT OJT
First-line supervisors/managers of personal service workers	8	\$26.33	Exp. in Field

Source: EMSI Complete Employment - 4th Quarter 2009

Critical Occupations: Offices of Physicians, Except Mental Health

Occupation	Job Growth (In Industry)	Median Hourly Wage (All Industries)	Average Education
Physicians and surgeons	374	\$56.10	Prof. DG.
Medical assistants	308	\$14.48	MT OJT
Registered nurses	263	\$31.78	Associate's
Receptionists and information clerks	159	\$13.63	ST OJT
Medical secretaries	108	\$16.11	PS Award
Office clerks, general	78	\$13.51	ST OJT
Billing and posting clerks and machine operators	52	\$16.74	MT OJT
Medical records and health information technicians	43	\$15.66	Associate's
First-line supervisors/managers of office and administrative support workers	41	\$24.99	Exp. in Field
Physician assistants	37	\$29.27	Bachelor's

Source: EMSI Complete Employment - 4th Quarter 2009

Critical Occupations: Offices of Real Estate Agents and Brokers

Occupation	Job Growth (In Industry)	Median Hourly Wage (All Industries)	Average Education
Real estate sales agents	522	\$8.81	PS Award
Real estate brokers	518	\$8.79	Exp. in Field
Property, real estate, and community association managers	293	\$10.77	Bachelor's
Appraisers and assessors of real estate	106	\$10.62	PS Award
Chief executives	25	\$41.01	Deg. + Exp.
Building cleaning workers, all other	23	\$8.29	ST OJT
Office clerks, general	23	\$13.51	ST OJT
Bookkeeping, accounting, and auditing clerks	15	\$17.72	MT OJT
Maintenance and repair workers, general	13	\$19.39	MT OJT
Executive secretaries and administrative assistants	10	\$21.90	MT OJT

Source: EMSI Complete Employment - 4th Quarter 2009

Critical Occupations: Managing Offices

Occupation	Job Growth (In Industry)	Median Hourly Wage (All Industries)	Average Education
Business operation specialists, all other	151	\$26.92	Bachelor's
Accountants and auditors	85	\$28.83	Bachelor's
Customer service representatives	81	\$17.47	Bachelor's
Managers, all other	79	\$33.36	Exp. in Field
Executive secretaries and administrative assistants	50	\$21.90	MT OJT
Bookkeeping, accounting, and auditing clerks	47	\$17.72	MT OJT
Financial analysts	46	\$27.66	Bachelor's
Computer systems analysts	42	\$37.57	Bachelor's
Computer software engineers, applications	39	\$43.52	Bachelor's
Financial managers	35	\$44.64	DG. + Exp.

Source: EMSI Complete Employment - 4th Quarter 2009

Critical Occupations: Custom Computer Programming Services

Occupation	Job Growth (In Industry)	Median Hourly Wage (All Industries)	Average Education
Computer software engineers, applications	256	\$43.52	Bachelor's
Computer software engineers, systems software	195	\$46.00	Bachelor's
Computer systems analysts	119	\$37.57	Bachelor's
Computer programmers	107	\$34.95	Bachelor's
Network and computer systems administrators	74	\$36.33	Bachelor's
Computer support specialists	67	\$24.23	Associate's
Computer specialists, all other	66	\$36.09	Associate's
Network systems and data communications analysts	57	\$33.14	Bachelor's
Computer and information systems managers	52	\$56.73	DG. + Exp.
Business operation specialists, all other	48	\$26.92	Bachelor's

Source: EMSI Complete Employment - 4th Quarter 2009

Critical Occupations: Local Government

Occupation	Job Growth (In Industry)	Median Hourly Wage (All Industries)	Average Education
Elementary school teachers, except special education	239	\$39.96	Bachelor's
Police and sheriff's patrol officers	135	\$34.92	LT OJT
Fire fighters	75	\$36.90	LT OJT
Middle school teachers, except special and vocational education	73	\$41.40	Bachelor's
Postsecondary teachers	61	\$32.58	Doctoral
Teachers and instructors, all other	59	\$40.37	Bachelor's
Secondary school teachers, except special and vocational education	48	\$49.87	Bachelor's
Business operation specialists, all other	40	\$26.92	Bachelor's
Registered nurses	38	\$31.78	Associate's
Special education teachers, preschool, kindergarten, and elementary school	38	\$35.38	Exp. in Field

Source: EMSI Complete Employment - 4th Quarter 2009

Regional Occupation Summary

Employment outlooks organized by occupation provide a more workforce-oriented (rather than industry-oriented) perspective. These are jobs that are in demand across all industries in the region.

All tables except those showing major occupation groups have been filtered to include only occupations with an average education level between “Moderate-term on-the-job training” and “Bachelor’s degree” inclusive.

Occupation Groups Providing the Most Jobs

The major occupation groups accounting for the most total regional jobs in 2010 are:

- Office and administrative support occupations
- Sales and related occupations
- Business and financial operations occupations
- Management occupations
- Food preparation and serving related occupations

High-Growth Occupations

The occupations with the most total new jobs from 2010 to 2015 are:

- Registered nurses
- Child care workers
- Customer service representatives
- Janitors and cleaners, except maids
- Retail salespersons

Specific Occupations Providing the Most Jobs

The largest specific occupations are:

- Retail salespersons
- Cashiers, except gaming
- Laborers and freight, stock, and material movers, hand
- Customer services representatives
- Office clerks, general

Occupations with Most Total Openings

The occupations with the most estimated openings (new jobs plus replacement jobs) are:

- Retail salespersons
- Customer service representatives
- Waiters and waitresses
- Managers, all other
- Business operations specialists, all other

Regional Occupations: Detailed Data

Major Occupation Groups, Region and State, 2010–2015

The following table summarizes regional occupations by major group, sorted by total 2010 jobs.

SOC Code	Description	REGION				STATE				
		2010 Jobs	2015 Jobs	Change	% Change	Repl. Jobs	Median Earnings	State 2010	State 2015	Median Earnings
11-0000	Management occupations	49,874	54,479	4,605	9%	9,755	\$37.27	532,965	569,110	\$29.03
13-0000	Business and financial operations occupations	50,323	56,059	5,736	11%	9,862	\$27.60	456,270	508,334	\$23.49
15-0000	Computer and mathematical science occupations	23,230	27,262	4,032	17%	6,532	\$36.80	162,521	185,923	\$33.02
17-0000	Architecture and engineering occupations	10,507	11,168	661	6%	1,796	\$35.18	89,417	94,262	\$32.01
19-0000	Life, physical, and social science occupations	8,124	9,070	946	12%	1,696	\$28.35	67,623	73,876	\$26.33
21-0000	Community and social services occupations	7,924	8,901	977	12%	1,653	\$18.21	102,928	113,801	\$17.06
23-0000	Legal occupations	4,448	4,867	419	9%	806	\$49.76	66,881	71,578	\$43.00
25-0000	Education, training, and library occupations	31,433	34,266	2,833	9%	5,816	\$32.93	440,496	472,994	\$28.95
27-0000	Arts, design, entertainment, sports, and media occupations	21,256	23,013	1,757	8%	4,239	\$19.34	192,503	207,651	\$15.46
29-0000	Healthcare practitioners and technical occupations	34,952	39,912	4,960	14%	8,099	\$32.34	350,573	392,384	\$30.58
31-0000	Healthcare support occupations	19,547	23,356	3,809	19%	4,827	\$12.42	168,975	194,502	\$12.17
33-0000	Protective service occupations	11,532	12,474	942	8%	2,524	\$22.66	149,254	159,752	\$21.56
35-0000	Food preparation and serving related occupations	47,704	51,846	4,142	9%	12,460	\$9.82	478,225	517,832	\$9.06
37-0000	Building and grounds cleaning and maintenance occupations	27,490	31,682	4,192	15%	6,503	\$11.25	288,522	324,738	\$10.25
39-0000	Personal care and service occupations	29,802	33,308	3,506	12%	6,795	\$11.05	271,276	297,544	\$10.51
41-0000	Sales and related occupations	98,925	106,252	7,327	7%	20,444	\$15.48	943,899	1,018,593	\$13.54
43-0000	Office and administrative support occupations	112,363	119,436	7,073	6%	20,155	\$16.60	1,054,800	1,104,744	\$15.05
45-0000	Farming, fishing, and forestry occupations	522	538	16	3%	82	\$12.86	20,338	20,487	\$11.76
47-0000	Construction and extraction occupations	34,496	37,490	2,994	9%	5,812	\$27.65	318,355	339,707	\$25.08
49-0000	Installation, maintenance, and repair occupations	22,697	24,219	1,522	7%	3,385	\$20.88	227,159	240,605	\$19.86
51-0000	Production occupations	45,172	44,413	(759)	(2%)	6,069	\$14.58	470,923	468,974	\$14.77
53-0000	Transportation and material moving occupations	46,317	49,035	2,718	6%	8,289	\$14.90	495,609	517,745	\$15.16
55-0000	Military Occupations	2,276	2,254	(22)	(1%)	267	\$9.19	48,386	47,908	\$14.71
		740,916	805,300	64,384	9%	147,866	\$20.83	7,397,900	7,943,047	\$18.81

Source: EMSI Complete Employment - 4th Quarter 2009

Note: For regions including areas in multiple states, state values are the sum or average of all states involved.

Top-Ranked Occupations by Total Jobs, 2010–2015

Occupations have been filtered by average education level to include only those between “MT OJT” and “Bachelor’s” inclusive.

SOC Code	Description	2010 Jobs	2015 Jobs	Change	% Change	Repl. Jobs	Median Earnings	Education Level
43-4051	Customer service representatives	12,192	13,730	1,538	13%	3,208	\$17.47	MT OJT
11-9199	Managers, all other	10,753	11,724	971	9%	2,015	\$33.36	Exp. in Field
29-1111	Registered nurses	10,646	12,263	1,617	15%	2,466	\$31.78	Associate's
13-1199	Business operation specialists, all other	10,353	11,722	1,369	13%	1,911	\$26.92	Bachelor's
13-2011	Accountants and auditors	9,432	10,469	1,037	11%	1,846	\$28.83	Bachelor's
43-3031	Bookkeeping, accounting, and auditing clerks	8,732	9,521	789	9%	1,459	\$17.72	MT OJT
41-4012	Sales representatives, wholesale and manufacturing, except technical and scientific products	8,636	8,751	115	1%	1,075	\$29.30	MT OJT
43-6011	Executive secretaries and administrative assistants	8,444	9,269	825	10%	1,484	\$21.90	MT OJT
41-1011	First-line supervisors/managers of retail sales workers	8,345	8,823	478	6%	1,341	\$15.48	Exp. in Field
43-6014	Secretaries, except legal, medical, and executive	7,157	7,432	275	4%	839	\$15.43	MT OJT
47-2061	Construction laborers	7,110	7,851	741	10%	1,001	\$19.27	MT OJT
41-9022	Real estate sales agents	6,703	8,115	1,412	21%	1,909	\$8.81	PS Award
47-2031	Carpenters	6,660	7,293	633	10%	1,069	\$29.25	LT OJT
41-9021	Real estate brokers	6,511	7,909	1,398	21%	1,880	\$8.79	Exp. in Field
31-1012	Nursing aides, orderlies, and attendants	6,329	7,336	1,007	16%	1,279	\$11.45	PS Award
43-1011	First-line supervisors/managers of office and administrative support workers	6,218	6,609	391	6%	1,024	\$24.99	Exp. in Field
51-2092	Team assemblers	5,781	5,815	34	1%	652	\$10.46	MT OJT
25-2021	Elementary school teachers, except special education	5,738	6,093	355	6%	972	\$39.96	Bachelor's
53-3032	Truck drivers, heavy and tractor-trailer	5,249	5,754	505	10%	961	\$20.17	MT OJT
49-9042	Maintenance and repair workers, general	4,790	5,114	324	7%	382	\$19.39	MT OJT

Source: EMSI Complete Employment - 4th Quarter 2009

Note: Median earnings are on an hourly basis for better comparison between full-time and part-time jobs.

Top-Ranked Occupations by Total Growth, 2010–2015

Occupations have been filtered by average education level to include only those between “MT OJT” and “Bachelor’s” inclusive.

SOC Code	Description	2010 Jobs	2015 Jobs	Change	% Change	Repl. Jobs	Median Earnings	Education Level
29-1111	Registered nurses	10,646	12,263	1,617	15%	2,466	\$31.78	Associate's
43-4051	Customer service representatives	12,192	13,730	1,538	13%	3,208	\$17.47	MT OJT
41-9022	Real estate sales agents	6,703	8,115	1,412	21%	1,909	\$8.81	PS Award
41-9021	Real estate brokers	6,511	7,909	1,398	21%	1,880	\$8.79	Exp. in Field
13-1199	Business operation specialists, all other	10,353	11,722	1,369	13%	1,911	\$26.92	Bachelor's
13-2011	Accountants and auditors	9,432	10,469	1,037	11%	1,846	\$28.83	Bachelor's
31-1012	Nursing aides, orderlies, and attendants	6,329	7,336	1,007	16%	1,279	\$11.45	PS Award
11-9199	Managers, all other	10,753	11,724	971	9%	2,015	\$33.36	Exp. in Field
15-1031	Computer software engineers, applications	3,179	4,091	912	29%	1,133	\$43.52	Bachelor's
11-9141	Property, real estate, and community association managers	4,127	4,983	856	21%	1,121	\$10.77	Bachelor's
43-6011	Executive secretaries and administrative assistants	8,444	9,269	825	10%	1,484	\$21.90	MT OJT
43-3031	Bookkeeping, accounting, and auditing clerks	8,732	9,521	789	9%	1,459	\$17.72	MT OJT
47-2061	Construction laborers	7,110	7,851	741	10%	1,001	\$19.27	MT OJT
15-1032	Computer software engineers, systems software	3,352	4,050	698	21%	935	\$46.00	Bachelor's
41-3099	Sales representatives, services, all other	4,149	4,817	668	16%	1,141	\$24.35	MT OJT
47-2031	Carpenters	6,660	7,293	633	10%	1,069	\$29.25	LT OJT
53-3032	Truck drivers, heavy and tractor-trailer	5,249	5,754	505	10%	961	\$20.17	MT OJT
49-3023	Automotive service technicians and mechanics	3,645	4,124	479	13%	834	\$19.29	PS Award
41-1011	First-line supervisors/managers of retail sales workers	8,345	8,823	478	6%	1,341	\$15.48	Exp. in Field
25-3099	Teachers and instructors, all other	3,971	4,381	410	10%	616	\$40.37	Bachelor's

Source: EMSI Complete Employment - 4th Quarter 2009

Top-Ranked Occupations by New Plus Replacement Jobs, 2010–2015

Occupations have been filtered by average education level to include only those between “MT OJT” and “Bachelor’s” inclusive.

SOC Code	Description	2010 Jobs	2015 Jobs	New + Repl. Jobs	Median Earnings	Education Level
43-4051	Customer service representatives	12,192	13,730	3,208	\$17.47	MT OJT
29-1111	Registered nurses	10,646	12,263	2,466	\$31.78	Associate's
11-9199	Managers, all other	10,753	11,724	2,015	\$33.36	Exp. in Field
13-1199	Business operation specialists, all other	10,353	11,722	1,911	\$26.92	Bachelor's
41-9022	Real estate sales agents	6,703	8,115	1,909	\$8.81	PS Award
41-9021	Real estate brokers	6,511	7,909	1,880	\$8.79	Exp. in Field
13-2011	Accountants and auditors	9,432	10,469	1,846	\$28.83	Bachelor's
43-6011	Executive secretaries and administrative assistants	8,444	9,269	1,484	\$21.90	MT OJT
43-3031	Bookkeeping, accounting, and auditing clerks	8,732	9,521	1,459	\$17.72	MT OJT
41-1011	First-line supervisors/managers of retail sales workers	8,345	8,823	1,341	\$15.48	Exp. in Field
31-1012	Nursing aides, orderlies, and attendants	6,329	7,336	1,279	\$11.45	PS Award
41-3099	Sales representatives, services, all other	4,149	4,817	1,141	\$24.35	MT OJT
15-1031	Computer software engineers, applications	3,179	4,091	1,133	\$43.52	Bachelor's
11-9141	Property, real estate, and community association managers	4,127	4,983	1,121	\$10.77	Bachelor's
41-4012	Sales representatives, wholesale and manufacturing, except technical and scientific products	8,636	8,751	1,075	\$29.30	MT OJT
47-2031	Carpenters	6,660	7,293	1,069	\$29.25	LT OJT
43-1011	First-line supervisors/managers of office and administrative support workers	6,218	6,609	1,024	\$24.99	Exp. in Field
47-2061	Construction laborers	7,110	7,851	1,001	\$19.27	MT OJT
25-2021	Elementary school teachers, except special education	5,738	6,093	972	\$39.96	Bachelor's
53-3032	Truck drivers, heavy and tractor-trailer	5,249	5,754	961	\$20.17	MT OJT

Source: EMSI Complete Employment - 4th Quarter 2009

Region: Northern Cook County

ZIP Areas: 60004, 60005, 60006, 60008, 60016, 60017, 60018, 60019, 60025, 60026, 60029, 60038, 60053, 60055, 60056, 60062, 60065, 60067, 60068, 60070, 60074, 60076, 60077, 60078, 60090, 60094, 60095, 60107, 60120, 60133, 60159, 60168, 60169, 60173, 60179, 60192, 60193, 60194, 60195, 60196, 60201, 60202, 60203, 60204, 60208, 60712, 60714

About EMSI & the Data

Economic Modeling Specialists Inc. (EMSI) is a professional services firm that specializes in integrated, value-added datasets, web-based analysis tools (**Strategic Advantage**), data-driven reports, and custom consulting. As a data provider, we gather and harmonize data from 90 state and federal sources, creating in-house a comprehensive and current database that is unsurpassed for its breadth and detail. Industry, workforce, and demographic data are available from state and county levels all the way down to individual ZIP codes, and users can build custom regions from county and ZIP code areas. In addition, by combining dozens of data sources, we can fill gaps in individual sources (such as suppressions and missing proprietors)—yielding a composite database that exploits the strengths of each source. Finally, our database is updated four times per year, so our subscribers have access to the most complete and up-to-date information on the market.

Industry Data

In order to capture a complete picture of industry employment, EMSI basically combines covered employment data from Quarterly Census of Employment and Wages (QCEW) produced by the Department of Labor with total employment data in Regional Economic Information System (REIS) published by the Bureau of Economic Analysis (BEA), augmented with County Business Patterns (CBP) and Nonemployer Statistics (NES) published by the U.S. Census Bureau. Projections are based on the latest available EMSI industry data combined with past trends in each industry and the industry growth rates in national projections (Bureau of Labor Statistics) and states' own projections, where available.

Occupation Data

Organizing regional employment information by occupation provides a workforce-oriented view of the regional economy. EMSI's occupation data are based on EMSI's industry data and regional staffing patterns taken from the Occupational Employment Statistics program (U.S. Bureau of Labor Statistics). Wage information is partially derived from the American Community Survey. The occupation-to-program (SOC-to-CIP) crosswalk is based on one from the U.S. Department of Education, with customizations by EMSI.